



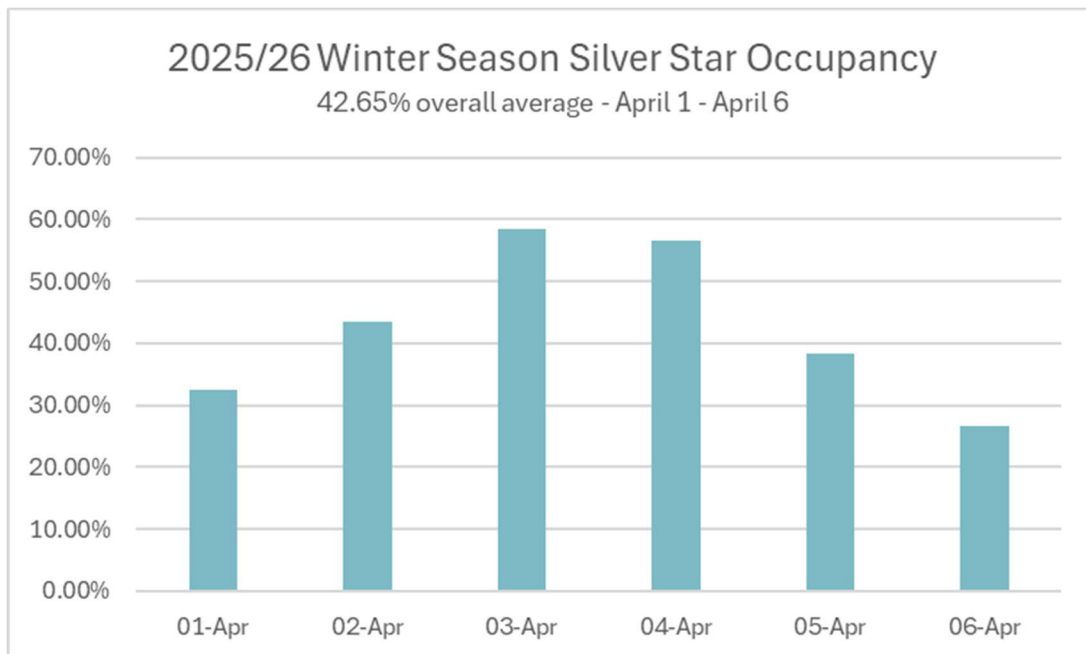
DESTINATION SILVER STAR

2025/26 Winter Season Occupancy Report as of April 1, 2026
Based on an average of 460 Rooms/Vacation Homes

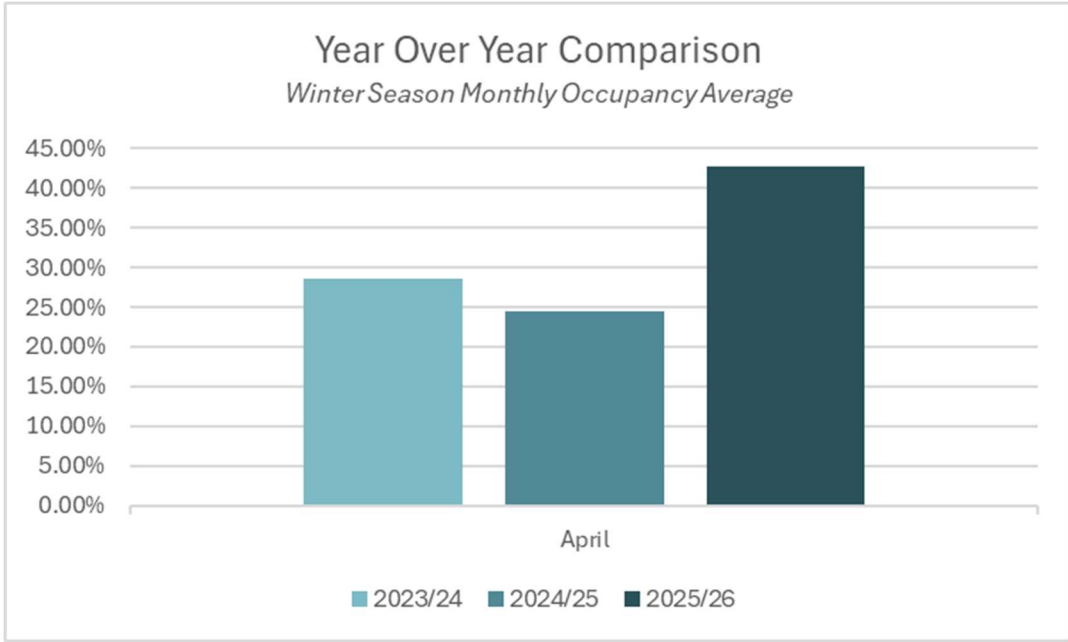
About this report: This occupancy report provides a snapshot of accommodation on performance across Silver Star, compiled from data submitted by our accommodation partners.

Report Summary

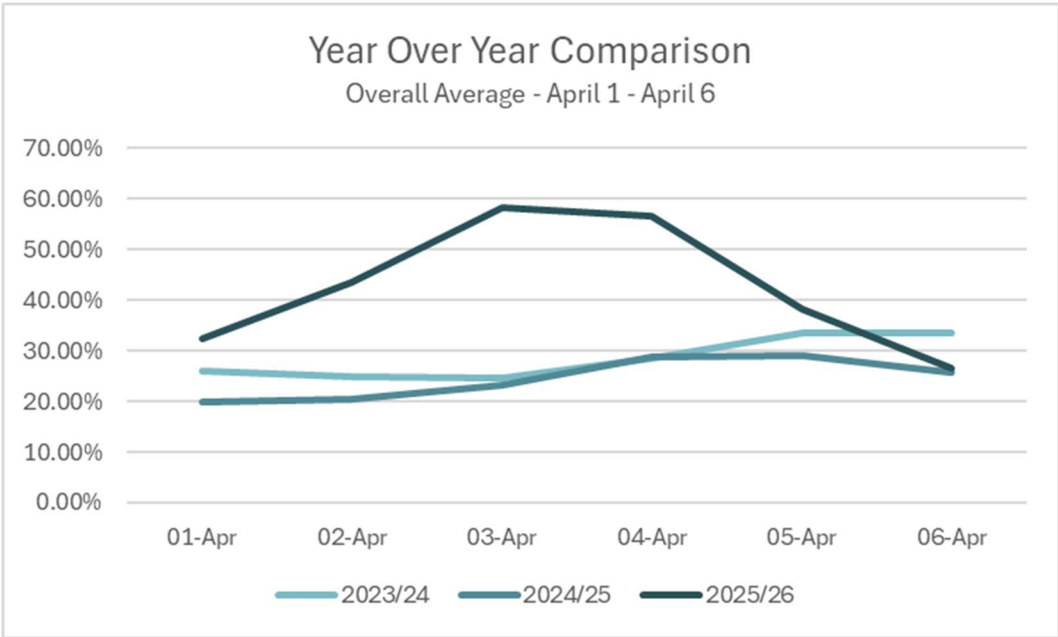
The resort season close-out period (April 1–6) posted an overall average occupancy of 42.65% across an average of 460 available rooms nightly. Occupancy peaked at 58.42% on April 3 before declining to 26.61% by April 6. Year-over-year, this represents a substantial improvement over both 2023/24 (28.50%) and 2024/25 (24.49%).



Daily occupancy for early April, reflecting end-of-season bookings as the resort approaches the closing of alpine operations. The average sits at 42.65%, with a modest weekend bump around April 3–4 reaching 56–58%.



Average occupancy rate for April compared across the past three seasons, showing overall booking trends. April shows the most significant jump, with 2025/26 at 42.65% standing nearly double the 2024/25 figure of 24.49%.



Daily occupancy trends for all three seasons, showing the 2025/26 line rising sharply above the relatively flat 2023/24 and 2024/25 lines on April 2-5 before all three converge near 25-33% on April 6.